

# Pallet Transfer System



**LANCO**  
INTEGRATED

**EMPOWERING GLOBAL ASSEMBLY**



# Our Products

Lanco Integrated designs and manufactures your **MPS 120** and **HFL 2002-S** pallet transfer system. We offer an assortment of standard track and pallet sizes to meet your product specifications. Is your project non-standard? Not a problem, we can custom configure to meet your footprint requirements.

The versatility of the Lanco's Transfer systems makes it easy to adapt as production demands change and grow. Initially create a semi-automatic system for small runs or low speeds, and later add more automation as production requirements increase.

We believe in the **Total Service Solution**. Your pallet transfer system will be **fully assembled** and **tested** prior to delivery. From design and manufacturing, to on-site installation and service...we are here for you.

## MPS 120



Mini Pallet Transfer System

## HFL 2002-S



Pallet Transfer System

*"Through collaboration and teamwork we succeed together; developing systems that enable your success."*

# MPS 120

## Mini Pallet Transfer System

### Modular & Flexible

- Modular conveyor elements are available from 500mm to 3000mm.
- Ability to start as an operator load station and can easily convert in the future.
- Transfer System can be easily reconfigured for new layouts and products.
- Ergonomic manual stations.
- Multi variant capability on one line.
- Ease of maintenance.
- Arrives fully assembled.

### Layout Options

#### Infinitely Customizable

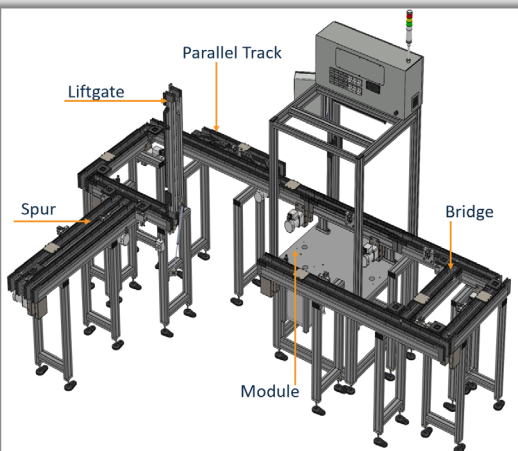
##### Examples

- Traditional "racetrack" layout.
- Over and Under layout with pallet elevators.
- Parallel track configurations.
- Parallel operations.
- Ergonomic manual workstations.

### Pallet

- Size: Width 120mm X 120mm
- Speed: 250mm per second
- RFID tracking located in pallets.
- 3kg load capacity per pallet.
- Pallet lifts available for high vertical load.
- Spring loaded rollers to a static anvil.
- Indexing options.

### Layout Example

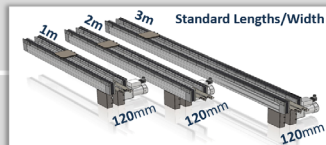


#### Pallet/Track Width

- Pallet: 120mm x 120mm
- Track: 120mm

#### Pallet/Track Length

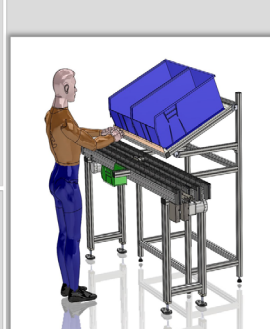
- Pallet: 120mm x 120mm
- Track: .5 meters – 3 meters



Over & Under with elevators



Dual Lane with 180° corners



Manual Workstation

# HFL 2002-S

## Pallet Transfer System

### Modular & Flexible

- Modular conveyor elements are available from 1000mm to 3000mm.
- Ability to start as an operator load station and can easily convert in the future.
- Transfer System can be easily reconfigured for new layouts and products.
- Ergonomic manual stations.
- Multi variant capability on one line.
- Ease of maintenance.
- Arrives fully assembled.

### Layout Options

#### Infinitely Customizable

##### Examples

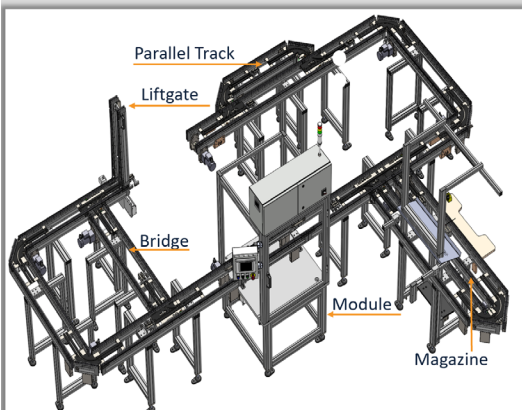
- Traditional "racetrack" layout.
- Over and Under layout with pallet elevators.
- Parallel track configurations.
- Parallel operations.
- Ergonomic manual workstations.

### Pallet

- Size: Width 200mm – 300mm
- Size: Length 250mm – 500mm
- Speed: 250mm per second
- RFID tracking located in pallets.
- \*12kg load capacity per pallet.
- Pallet lifts available for high vertical load.
- Spring loaded rollers to a static anvil.
- Indexing options.

\* Higher load capacity available upon request.

Layout Example

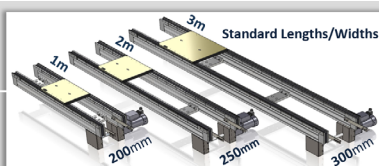


#### Pallet/Track Width

- 200mm
- 250mm
- 300mm

#### Track Length

- Varies with track width.
- Range: 250mm to 500mm
- Track: 1 meter – 3 meters



Layout Option



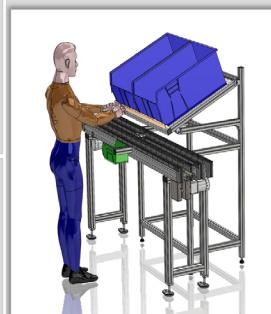
Over & Under with elevators

Layout Option



Dual Lane with 180° corners

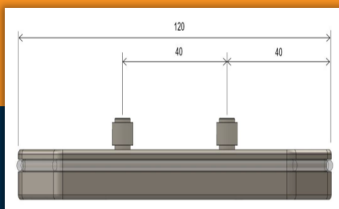
Layout Option



Manual Workstation



# Pallet Indexing



## MPS 120

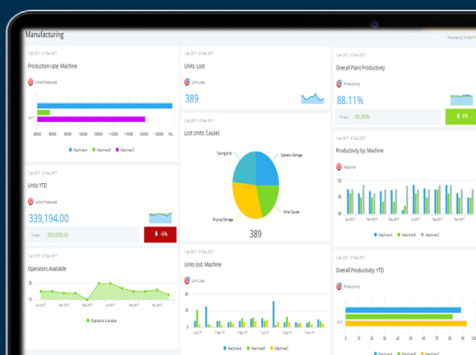
- Dual indexing capability
- Position accuracy  $\pm 0.02\text{mm}$
- Multi variant capability
- 40mm pin positioning



## HFL 2002-S

- Customizable Indexing
- Position accuracy  $\pm 0.02\text{mm}$
- Multi variant capability
- Pin positioning between 20mm and 40mm.

# Controls



## Technology

- Remote Dashboard
- Realtime Queue
- RFID Process Control
- Multiple Indexing Positions
- Ability to control the system from a tablet

## Global Footprint



## Connect With US

[WWW.lancointegrated.com](http://WWW.lancointegrated.com)

[INFO@LANCO.NET](mailto:INFO@LANCO.NET)

